

Local Development Framework for Bradford

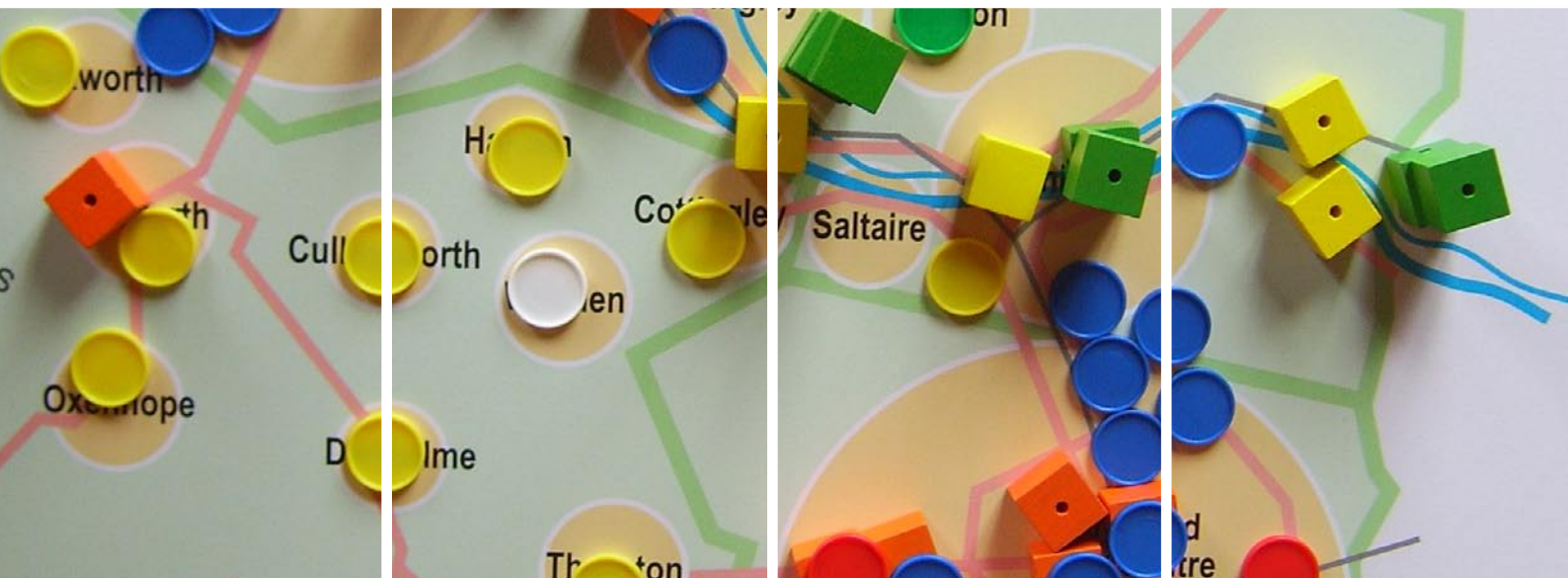
# Core Strategy

## Issues and Options

### Consultation Event Log

Stakeholder Event : WHARFEDALE  
Ridings Hall, Ilkley

16 June 2007









<b>CONTENTS</b>	<b>PAGE</b>
<b>1.0 EVENT OVERVIEW</b>	<b>1</b>
<b>2.0 LIST OF ORGANISATIONS &amp; GROUPS INVITED</b>	<b>2</b>
<b>3.0 LETTER OF INVITE</b>	<b>11</b>
<b>4.0 BOOKING FORM</b>	<b>13</b>
<b>5.0 DELEGATE LIST</b>	<b>16</b>
<b>6.0 EVENT PROGRAMME</b>	<b>17</b>
<b>7.0 POWERPOINT PRESENTATION</b>	<b>18</b>
<b>8.0 PROMPT SHEET</b>	<b>25</b>
<b>9.0 FACILITATORS' NOTES</b>	<b>28</b>
<b>10.0 EVALUATION FORM</b>	<b>37</b>
<b>11.0 EVALUATION ANALYSIS</b>	<b>39</b>



## 1.0 EVENT OVERVIEW

### OBJECTIVES

- 1.1 The event had two broad objectives:
1. Raise awareness of the Core Strategy Issues and options for Bradford.
  2. Engage with key stakeholders in exploring the key issues and possible options for addressing them in the Core Strategy

The event focused on the Issues and Options Papers in particular *Topic Paper 2: The Spatial Vision and Strategy for Bradford*.

### PARTICIPANTS

- 1.2 The Council targeted invites to local organisations and groups with an interest in the area. The letter of invite and a list of invitees can be found below. Participants were sent out copies of the relevant Topic Papers prior to the event, as well as the programme.
- 1.3 A total of 16 delegates plus 4 organisers and facilitators attended the event. The letter of invite, booking form and list of delegates can be found later in this report.

### PROGRAMME

- 1.4 The event took the form of a half-day, which started with scene setting presentations followed by break out groups, which looked two key areas. A five minute DVD was used at the start of the presentation to set the scene.

### DOCUMENTATION

- 1.5 Copies of the Issues and Options Reports were available on registration as well as the LDF Leaflet No2 on the Core Strategy. A delegate pack was produced which contained:
- Programme
  - Delegate list
  - Copies of each of the presentations

### BREAK OUT GROUPS

- 1.6 The break out groups were designed to allow people to express their opinions on the future of the District, more specifically the main issues facing the area and then in the second session, where the majority of housing and employment development should be located.
- 1.7 There were three break out groups for each session. Each had a dedicated facilitator as well as a scribe to record the discussions.

### EVENT EVALUATION AND FEEDBACK

- 1.8 Each delegate pack included an event evaluation form. A total of 8 delegates completed a form. These have been analysed and used to inform later events.

## 2.0 LIST OF ORGANISATIONS AND GROUPS INVITED

14th Keighley (Haworth) Scout Group  
 20th Bradford South Scout Group  
 21st Bradford Guides, Brownies, Rangers  
 21st Halifax (Queensbury) Boys Brigade  
 2nd Riddlesden Scout and Guide Group  
 34th Bradford South Scout Group  
 36th Bradford South Scout Group  
 68th Bradford South Scout Group  
 8 Coombe Hill  
 91st Bfd Guides Rainbows and Boys Brigade  
 A A Planning Services  
 A Khawaja Architecture Building ServicesLtd  
 Abbeyfield House  
 ABDRA  
 ADAAB  
 Addingham Bowling Club  
 Addingham Civic Society  
 Addingham Parish Council  
 Advice and Training Centre  
 African Community Support Project  
 AFTOC  
 AFTOC  
 Agape  
 Age Concern Bradford & District  
 Ahmadiyya Movement Mosque  
 Ahmadiyya Muslim Association  
 Aire and Calder Rivers Group  
 Aire Valley Conservation Society  
 Aire Valley Neighbourhood Watch  
 Aire Valley Rail Users Group  
 Aire Valley Trade Force Ltd  
 Aire Valley Venture Scout Unit  
 Aire View Infant School  
 Aireborough Planning Services  
 Airedale and Craven Relate  
 Airedale Beekeepers Association  
 Airedale Cricket Club  
 Airedale General Hospital  
 Airedale Music Company  
 Airedale NHS Trust Community Drugs  
 Airedale Partnership  
 Airedale Writers' Circle  
 Al Huda Institute  
 Albion Juniors AFC  
 Aldersgate Estates Ltd  
 Aldersgate Methodist Church  
 Aldersgate Parent & Toddler Group  
 Al-Faouq Associates  
 All Saint's 60+ Group  
 All Together  
 Allerton Community Association  
 Alley Cats Over 50's Line Dance Club  
 Allison and MacRae  
 Ambler Thorn Play Group  
 Anchor Housing  
 Anchor Housing Social Club  
 Anchor Trust  
 Ancient Monuments Society  
 Anjuman E Haaideria  
 Apna Ghar Community Association  
 Apperley Bridge Development Residents Association  
 Arthritis Care  
 Asa Briggs Bowling Club  
 Ashbourne Estate Community Association  
 Ashdown Friendship Club  
 Asian Business Forum  
 Asian Disability Awareness Action in Bradford  
 Asian Disability Network  
 Asian Games Tournament  
 Asian Trades Link  
 Asian Women & Girls Centre  
 Asian Women's Support Group  
 Asian Youth and Cultural Organisation  
 Asquith Properties  
 Assisi Centre  
 Assisi House Project  
 Ataxia Self Help Group  
 Atlas Primary  
 Atlas Primary School  
 Attock Park Residents Association  
 Autistic Spectrum Disorder Team  
 Azaad Kashmir  
 Azad Cricket Club  
 B P A  
 Baby Sense and Toddler Gym  
 BAFR  
 Baildon & District Residents Association  
 Baildon Action For Youth  
 Baildon Civic Society  
 Baildon Community Council  
 Baildon Community Link  
 Baildon Home Farm Trust  
 Baildon Music Festival  
 Baildon Peace Group  
 Baildon Shared Futures  
 Bangladesh Community Association  
 Bangladesh Community Cultural Organisation  
 Bangladeshi Youth Club  
 Bank Top Harriers ARLFC  
 Bankfoot Action Plan  
 Bankfoot Darby and Joan Club  
 Bankfoot Villa Football Club  
 Banks Long & Co  
 Barkerend Childrens Centre  
 Barkerend Primary  
 Barkerend Primary School  
 Barton Willmore Planning Partnership  
 Basement Gym  
 BAZM-E-ILM-O-FUN  
 Bazm-e-urdu Bradford  
 BCA  
 BCEP Community Urban Design  
 BCFC Disabled Supporters Association  
 BD4Family, Parents & Toddlers  
 BD6 in Stitches  
 Beckwith Design Associates  
 Bedale 'Darby & Joan' Luncheon Club  
 Beechcliffe Face  
 Beldon Sports FC  
 Belle Vue Girls School  
 Ben Bailey Homes  
 Ben Rhydding Action Group/Save Us Pub  
 Bereavement Welfare Association  
 Bierley Community Centre  
 Bierley Walkers  
 Bierley Youth Action Project  
 Bi-Lingual Learning & Teaching Association  
 Bingley & Shipley Mencap



Bingley Amateur Operatic Society  
 Bingley Arts Centre  
 Bingley Civic Trust  
 Bingley CVS  
 Bingley Environmental Transport  
 Bingley Labour Party  
 Bingley Society of St Vincent de Paul  
 Bingley Voluntary Action  
 Bioregional Quaitain Developments  
 BISAN  
 BKYP - Bradford & Keighley Youth Parliament  
 Black Mountain Millennium Green/Brunel Community Association  
 Blue Room properties  
 BMEP & JAS  
 Bob Jarman  
 Bolling Special School  
 Bolton Methodist Church  
 Bolton Villas CC  
 Bolton Villas Cricket Club  
 Bolton Woods Community Association  
 Borough of Pendle Council  
 Bracken Bank Community Centre  
 Brackenhill Primary School  
 Bradford & Airedale Teaching Primary Care Trust  
 Bradford & District Chamber of Trade  
 Bradford & District Coalition of Disabled People  
 Bradford & District Local Produce Markets  
 Bradford & Ilkley College  
 Bradford & Northern Housing Association  
 Bradford Access Action  
 Bradford Action for Refugees  
 Bradford Aid for Kosovo  
 Bradford All Stars  
 Bradford Alliance on Community Care  
 Bradford and District Youth Offending Team  
 Bradford Area Play Association  
 Bradford Association of Visually Impaired People & Centre for Deaf People  
 Bradford Bandits BMX Racing Club  
 Bradford Botany Group  
 Bradford Breakthrough Ltd  
 Bradford Business Link  
 Bradford Cathedral  
 Bradford Centre Regeneration  
 Bradford Chamber of Commerce & Industry  
 Bradford City Disabled Supporters Association  
 Bradford City Farm Association Ltd  
 Bradford City Football Club  
 Bradford City Womens Football Club  
 Bradford Civic Society  
 Bradford Click-On  
 Bradford College  
 Bradford Community Arts Ltd  
 Bradford Community Broadcasting  
 Bradford Community Environment Project  
 Bradford Community Health Trust Leeds Road Hospital  
 Bradford Community Housing Trust  
 Bradford Council-Museums & Galleries Service  
 Bradford Cyrenians  
 Bradford Diocesan Office  
 Bradford District Chamber of Trade  
 Bradford District Senior Power  
 Bradford Dudley Hill Under 12's  
 Bradford Dynamos  
 Bradford East Area Federation  
 Bradford East District Venture Scout Unit  
 Bradford Empowerment Project Information Shop  
 Bradford Environmental Action Trust  
 Bradford FSV  
 Bradford Gymkhana Cricket Club  
 Bradford Hate Crime Alliance  
 Bradford Hospitals NHS Trust  
 Bradford International Kite Festival Company  
 Bradford Joint Training Board  
 Bradford Ladies Hockey Club National League  
 Bradford Local Communities FC  
 Bradford Moor & Thornbury Forum  
 Bradford Moor African Caribbean Young People's  
 Bradford Moor Bowling Club  
 Bradford Moor Community Primary  
 Bradford Moor Consortium  
 Bradford Moor Cricket Club  
 Bradford Moor Housing Office  
 Bradford Moor Neighbourhood Partnership  
 Bradford Moor Youth & Community Project  
 Bradford Moor Youth Sports Association  
 Bradford Motor Education Project  
 Bradford Night Stop  
 Bradford North Retirement Group  
 Bradford Older Carers' Association (Mencap)  
 Bradford Older People's Alliance  
 Bradford Ornithological Group  
 Bradford Park Avenue Junior Football Club  
 Bradford People First  
 Bradford Punjabi Cultural Society  
 Bradford Racial Equality Council  
 Bradford Ramblers Association Group  
 Bradford Real Nappy Project (BEAT)  
 Bradford Repetitive Strain Injury Support  
 Bradford Retail Action Group  
 Bradford Scout/Guides Water Activities  
 Bradford Secondary PRU  
 Bradford Shalimar Cricket Club  
 Bradford Sport & Recreation Association  
 Bradford Tigers J F C  
 Bradford Trades Union Council  
 Bradford Trident  
 Bradford University  
 Bradford Urban Wildlife Group  
 Bradford Vision  
 Bradford Vision  
 Bradford Vol Action Group for Disabled Persons  
 Bradford Wildcats F C  
 Bradford Women's Aid  
 Bradford WRVS  
 Bradford Youth Players  
 Bradford Youth Service  
 Bradleys Both Parish Council  
 Bradnet  
 Braithwaite & Guard House Community Association  
 BRAVE Women's Support Group  
 Brewster Bye Architects  
 British Red Cross  
 British Telecom  
 BRITISH WHEELCHAIR SPORTS FEDERATION  
 British Wind Energy Association  
 Bruce Barnes  
 Brunel Housing  
 Brunel Housing Association  
 Brunel Support Works  
 Brunel Tenants Forum  
 BSCP  
 BSRAPD  
 BT (Bradford) Cricket Club

Buildings Consultation Group  
 Burger Court Nursing Home  
 Burley Community Council  
 Burley in Wharfedale Parish Council  
 Burnett Planning & Development  
 Buttershaw Action Group  
 Buttershaw Bantams AFC  
 Buttershaw Baptist Church  
 Buttershaw Celtic FC  
 Buttershaw Christian Family Centre  
 Buttershaw High Rock Challenge Group  
 Buttershaw High School  
 Buttershaw Primary School  
 Buttershaw Youth Centre  
 Buttershaw Youth Football Club  
 Buy a Child a Smile  
 By Worth Craft Group  
 BYAP  
 BYCO  
 BYDP  
 Byron Primary School  
 CABE  
 Caddick Development  
 Calder Architectural Services Limited  
 Calderdale Metropolitan Borough Council  
 CALEB  
 Caleb Project  
 Cambing Cricket Club  
 Campaign For Real Ale  
 Canterbury Youth Club  
 Careers Bradford Ltd  
 Carlton ARLFC  
 Carlton-Bolling College  
 Caroline Street Social Club  
 Carrwood Centre  
 Carrwood Primary School  
 Carter Jonas  
 Cathedral Centre Project  
 Cathedral College Deputy Head  
 Cavendish Primary School  
 CB Richard Ellis Ltd  
 CBMDC - Shipley East Regeneration  
 CBMDC Youth Service  
 Cellar Project  
 Central Libraries  
 Centre for Deaf People  
 CHACH Association  
 Chair - Newlands Plus Pact Board  
 Chairobics Group  
 Challenge College  
 Charities Information Bureau  
 Chattabox Holiday Club  
 Checkpoint Women's Group  
 Chief Planning Inspector  
 Chris Thomas Ltd Outdoor Advertising Consultants  
 Christians Against Poverty  
 Churches Community Group  
 City Centre Project  
 City Lofts Development  
 City of Bradford Esprit Diving Club  
 City of Bradford YMCA  
 City of Wakefield M D C  
 City PCG  
 City PCT - Manningham Clinic  
 Clayton ARLFC  
 Clayton Heights Community Group  
 Clayton Heights Mother & Toddler Group  
 Clayton Parish Council  
 Clear Designs  
 Clerk to Ilkley Parish Council  
 Clockhouse Project  
 CNet  
 COM-B Computing Bradford  
 Commission for Architecture and the Built Environment  
 Community Cohesion Facilitation Service  
 Community Development Worker  
 Community Exercise Sessions  
 Community Involvement Worker  
 Community Network  
 Community Safety Fire Department  
 Community Safety Officer  
 Community Service Volunteers  
 Community Team Learning Disabilities  
 Community Unity  
 Community Works  
 Communityworks Community Centre & Childrens Centre  
 Cononley Parish Council  
 Cooper Lane Primary School  
 Cottingley Community Association  
 Cottingley NAP  
 Cottingley Theatre Club  
 Council for British Archaeology  
 Countryside Properties (Northern) Ltd  
 Cowling Parish Council  
 CPRE Bradford District  
 CPRE West Yorkshire  
 Craven Design Partnership  
 Craven District Council  
 Craven United FC  
 Croft Hall Social Club  
 Crofts Thornbury U13 Soccer Team  
 Crosley Wood Residents Group  
 Crosley Wood Tenants Action Group  
 Crosley Wood Tenants Association  
 Cross Roads Junior Football Club  
 Cross Roads Junior Football Club  
 Crossflatts Village Society  
 Crossley Hall Primary School  
 Cullingworth Parish Council  
 Cullingworth Playsafe Committee  
 Dacre, Son and Hartley  
 David Beighton Architects  
 David Wilson Estates  
 Dawatul Islam  
 DDA Task Team  
 De-Ja-Vu  
 Denholme Residents Action Group  
 Denholme Town Council  
 Denton Parish Council  
 Department of Peace Studies (Bradford University)  
 Depol Associates  
 Design Exchange  
 DevPlan UK  
 Dial Bradford  
 Dialogue Communicating Planning  
 Disability Advice Bradford  
 Disability Advice Bradford  
 DLA Architecture  
 Dominican Association of Bradford  
 Donaldsons  
 DPDS Consulting Group  
 Draughton Parish Council  
 Drawtech  
 Drighlington Parish Council

Drivers Way Residents Group  
 DTZ Pleds Consulting  
 Dudley Hill Imps  
 Dudley Hill Rangers FC  
 Dulay Seymour  
 Dunstford Group for older People  
 Early Years & Childcare Service (CBMDC)  
 East Bierley Local History Group  
 East Bowling Unity Pensioners Club  
 East Morton Primary School  
 Eastburn Playgroup/Eastburn Playing Fields Associa  
 EBRO  
 Eccleshill Baltic House  
 Eccleshill Community Play Group  
 Eccleshill Daycare Centre  
 Eccleshill Football Club  
 Eccleshill Karate Club  
 Eccleshill Mechanics Institute  
 Eccleshill Sports & Social Club  
 Eccleshill Veterans Association & Bowling Club  
 Eccleshill WMC  
 Eccleshills Utd  
 Eddisons Commercial  
 Edwards Rainbow Centre  
 Eldwick Village Society  
 ELIM Church Centre  
 English Heritage  
 Environment Agency  
 Environmental Taskforce  
 Eric Barraclough  
 Eric Breare Design Associates  
 Esholt War Memorial Institute Bowling Section  
 Estonian Club  
 F and W Drawing Services  
 Fabric - Forum for the Arts in Bradford  
 Fagley Community Social Club  
 Fagley Football Club  
 Fagley Lane Action Committee  
 Fagley Over 60's  
 Fagley Sports and Social Club  
 Fagley Tenants & Residents Association  
 Fagley Youth and Community Centre  
 Fairweather Green Working Mens Club  
 Farcliffe Family Centre  
 Farnhill Parish Council  
 Farrell and Clark  
 Faxfleet Residents Association  
 Fearnville Primary School  
 Feversham Primary School  
 Fibromyalgia Support  
 First Bradford  
 First Martyrs Social Centre  
 Fitness First  
 Forum Focussed on Pensioner Power  
 Four Square Drawing Services  
 Foxhill Guides  
 Foxhill Primary School  
 Foyer Development Manager  
 Francis House Residents Association  
 Freshstart  
 Friends of Alma Nursery  
 Friends of Bowling Park  
 Friends of Bradford Youth Players  
 Friends of Buck Wood  
 Friends of Harold Park  
 Friends of Lister Park (FLIP)  
 Friends of Menston Primary School  
 Friends of Newhall Park Primary School  
 Friends of Peel Park  
 Friends of Roberts Park  
 Friends of Swain House  
 Friends of Undercliffe Cemetary  
 Friends of Woodside Primary School  
 Friends of Wycliffe CE Primary  
 Friends Together  
 Frontline Initiative  
 Fun Care Out of School Holiday Club-Step 2 Young  
 People's Health Project  
 Future Energy Yorkshire  
 Future For Women  
 G R Morris Town Planning Consultant  
 Game On (Leisure Club/Pool Centre)  
 Garbe Real Estate Ltd  
 Gateway Trinity Football Clu  
 George Wimpey Northern Yorkshire Ltd  
 Get up&go club  
 Gildersome Parish Council  
 Gingerbread Housing Project  
 Gingerkidz  
 Girdlington Action Partnership  
 Girdlington Community Centre  
 Girdlington Primary  
 Glenroyd Residents Association  
 Glusburn Parish Council  
 Goitside Regeneration Partnership  
 Goldfinch Estates Ltd  
 Good Companions Dancing Club  
 Government Office for Yorkshire & The Humber  
 GP Planning and Building Services  
 Grange Girls Project  
 Great Horton Youth Club  
 Green Lane Primary School  
 Greenfield  
 Greenfield School  
 Greengates Albion Football Club  
 Greengates Allotment Society  
 Greengates Juniors Football Club  
 Greengates Liberal Club  
 Greengates Primary School  
 Greengates Veterans Association  
 Greengates Veterans Bowls Association  
 Greenhill Action Group  
 Greenhill Friday Club  
 Greenhill Resource Centre  
 Greenway Amenity Group  
 Greenwood Youth & Community Centre  
 Gregory Properties  
 Grosvenor Association  
 Grove House Primary School  
 Guru Gobind Sikh Temple  
 Gurunanak Sikh Temple  
 GVA Grimley  
 Hackney Carriage Proprietors  
 HALE  
 Halliday Clark  
 Ham Group  
 Hanfia Mosque  
 Hanover Close - Estate Office  
 Hanson School  
 Harbourne Residential Care Centre  
 Harbourne Residents Group  
 Harden Village Society  
 Harden Youth Club  
 Harrogate District Council

Haworth & Oxenhope District Bridleways Group	Idle WMC
Haworth Road Health Centre	Idle Working Mens Club & Institute
Haworth Road Playgroup	Idle YMCA
Haworth, Cross Roads & Stanbury Parish Council	Idlethorpe Indoor Bowlers Club
Haycliffe School	ies
Haycliffe Special School	Ilkley Civic Society
Hayes Dobson Developers Ltd	Ilkley CVS
Hazel Beck Action Group	Ilkley Design Statement
Head of Town Planning Legislation Unit	Immaculate Conception Church
Healthy Heaton Group	Indian Workers Association
Heartsmart	Indigo Planning Ltd
Heaton Old Peoples Entertainment and Social Centre	Inland Waterways Association
Heaton Park Cricket Club	Interfaith Centre
Heaton Utd	Iqra Community Primary School
Heaton Woods Trust	ISIS Project
Help the Aged	Islamic Cultural and Educational Assoc.
Hendford Drive & Otley Road T & R Assoc.	Islamic Cultural Centre
Hepworth and Idle Cricket Club	Islamic Relief Agency
High Fernley Primary School	Italian Senior Citizens Association
High Park Rest Home	IT's Fun To Dance
Highgate News	J C Redmile
Highways Agency, Yorkshire & Humber	J O Steel Consulting
Hindu Cultural Society	J R Wharton Architect
HJ Banks and Co Ltd	Jamiat Ahl-E-Hadith
Hollingwood Primary	Jamiyat Tabliga-ul-Islam
Holme Christian Care Centre	Jeff McQuillan Consulting
Holme United Reformed Church	Jenny Lane Action Group
Holmewood Activity Centre	Jer Lane Cricket Club
Holmewood Community Council	Jireh House Community Centre
Holmewood Elderly Persons Forum	Joseph Rowntree Charitable Trust
Holmewood PACT	Jubilee Outreach Yorkshire
Holmewood Raiders	Just Nails
Holmewood United Football Club	JW School of Dance
Holy Trinity Church	KADAL
Holybrook Centre	Karmand Community Centre
Holybrook Primary School	Katana Ju Jit Su Club
Holyfamily RC Secondary School	Keighley Bangladeshi Youth Organisation
Home Builders Federation	Keighley College
Home Safety Project Co-ordinator	Keighley Local Enterprise Agency
Home Start Shipley Co-ordinator	Keighley NE
Homestart	Keighley PACT
Homestart Bradford North	Keighley Town Council
Horton Bank Top Playgroup	Keighley Voluntary Services
Horton Grange	Kelly Architectural Design
Horton Grange Regeneration PACT	Kensington Health Centre
Horton Park Centre	Kent's Leisure Centre
Housing Corporation, NE Region	Keyhouse Project
How Planning	Khalifa Society
Hum Nuwa	Kidz Klub
Human Neighbourhood Project	Kidzone Unit Manager
Humdard	Killingham Primary School
Hungarian Heritage	Kings Park Environment Focus Group
Hungarian Heritage	Kirkgate Carers' Group
Idle & Thackley AODS	Kirkgate Community Centre
Idle Baptist Church and Community Centre	Kirkgate Studios & Workshops
Idle C of E Primary School	Kirklees Metropolitan Council
Idle Corps	Knowleswood Primary School
Idle Cricket Club	LA Sante
Idle Hands Cross Stitch & Craft Club	Laisterdyke Business & Enterprise
Idle Independent Church	Laisterdyke Centre
Idle Juniors	Laisterdyke Cricket Club
Idle Parish Church	Laisterdyke Local History Group
Idle Salvation Army	Laisterdyke Trinity Church
Idle Tenants and Residents Association	Lancashire County Council
Idle Tide Committee	Land & Development Practice
Idle Upper Chapel	Landmark Securities
Idle Village Tenants & Residents	Landtask

Laneshaw Bridge Parish Council  
 Langtree  
 Lapage Primary & Nursery School  
 Lawcroft House Police Station  
 Learning and Skills Council  
 Leeds City Council  
 Leeds Friends of the Earth  
 Leeds/Bradford International Airport  
 Legrams Lane U5's & Women's Centre  
 Leith Planning Ltd  
 Lesleys Hairstylist  
 Let Wyke Breathe  
 Liasterdyke Community Centre  
 Lidget Green Community Partnership  
 Lidget Green Primary  
 Light of the World Community Centre  
 Lilycroft Primary School  
 Little Horton NAP  
 Littman Robeson  
 Low Moor & Wyke British Legion (Women's Section)  
 Low Moor Local History Group  
 Lower Fields Primary School  
 Lowerfields School  
 Lowerhouse Close Residents  
 M Stephenson  
 Making Space  
 Manningham & Girdlington Heat Project  
 Manningham & Girdlington Plus Project  
 Manningham & Girdlington SRB  
 Manningham Bloom  
 Manningham Brotherhood Cricket Club  
 Manningham FC  
 Manningham Hockey Club  
 Manningham Housing Association  
 Manningham Library  
 Manningham Mills Cricket Club  
 Manningham Mills Sports Association  
 Manningham NAP  
 Manningham Parish Church  
 Manningham Project  
 Manningham Residents Association  
 Manningham Sports Centre  
 Manningham Youth Project  
 Manor Property Group  
 Maple Properties  
 Marilyn Brichard  
 Mark Brearley & Co Chartered Surveyors  
 Masts  
 Mauritian Society  
 Mayfield and Clayhill Tenants Group  
 McCann's DIY Centre  
 McGinnis Development  
 Meadowcroft Care Centre  
 Menston Arts Club  
 Menston Cares  
 Menston Community Association  
 Menston Parish Council  
 Menston Singers  
 Mental Health Service Users Group  
 Mercury Communications  
 Micklethwaite Village Society  
 Midas Touch Asian Musical Group  
 Middleton Parish Council  
 Millan Centre  
 Millan Centre  
 Millennium Volunteers  
 Milton House  
 Minister of Clayton Heights Methodist Church  
 Miriam Lord First School  
 Miriam Lord Primary School  
 Missol-e-sussi  
 Mobile Operators Association  
 Mobility Planning Group  
 Monday Night Social Group Trust  
 Morton Village Society  
 Mothers Union  
 Mr Simon Loveitt  
 Ms Angela Maxwell  
 Ms Husenara Sher & Javairia Sabir  
 Multi Arts International  
 Multiple Sclerosis Friends  
 Mums's and Tots at Suttys  
 Munch Bunch Toddlers Group  
 Munchbunch Toddlers  
 Muslim Cultural Association  
 National Children's Home  
 National Farmers Union  
 National Federation of Women's Institutes  
 National Media Museum  
 Natural England  
 Neighbourhood Element  
 Neighbourhood Watch Co-ordinator  
 Nesfield with Langbar Parish Council  
 Netherlands Avenue School & Community Nursery  
 Network East Action Trust  
 Network Rail  
 New Horizons  
 New Horizons  
 New Mason Properties  
 New Virginia Tavern  
 Newby House Tenants and Resident Group  
 NEWCA  
 Newhall Park Primary School  
 Newholme  
 Newlands (Pregnant Schoolgirl Unit)  
 Newlands Local Enterprise LTD  
 Newton Street Day Centre  
 North Bradford Primary Care Trust  
 North Bradford Retired Men's Forum  
 North Bradford Retired Persons Action Group  
 North Country Homes Group Ltd  
 North Wing Community Centre  
 North Wing Mission Community Centre  
 Northcote C C  
 Northern Orchestral Enterprises  
 Norwood Green Cricket Club  
 Npower Renewables  
 Nuttall Yarwood and Partners  
 Oakenshaw Residents Association  
 Oakenshaw Veterans Association  
 Oakworth Village Society  
 Oasis Complementary Therapy  
 Oddfellows Arms Inn  
 Odsal / Sedbergh Junior Rugby Club  
 Odsal Residents Liaison Group  
 Older People's Focus Group  
 Olive Branch Trust  
 Oltergraft Planning Services  
 Omega Design  
 On Track  
 Operational Manager - Manningham One Stop Centre  
 Ormond House Tenants Association  
 Otley Road Tenants and Residents Forum  
 Otley Town Council

Our Lady & St Brendan's Catholic Primary  
 Oxenhope Parish Council  
 Oxenhope Social Club  
 Oxford Road R.A.  
 P.M Coote  
 PACT  
 Pact Co-ordination Project  
 PACT Team Leader  
 Pakistani Women's Forum  
 Parent and Toddler Group  
 Parkgate Design  
 Parkland Primary School  
 Parkside Playgroup  
 Parkside Residents Association  
 Pastor Joe Link  
 Paul & Co  
 PCT  
 Peacock and Smith  
 Peel Park Primary School  
 Penny Trepka  
 Physically Disabled Forum  
 Piccadilly Estate management Ltd  
 Pizza Box  
 Planet Design Group  
 Planning Potential  
 Planning Prospects Ltd  
 PLAYCENTRE  
 Plot of Gold Ltd  
 Plumpton Park  
 Pollard Park Residents Association  
 Pondsides Neighbours Group  
 Poplars Farm Primary School  
 PPG Land Ltd  
 Presence FM  
 Priestley Centre for the Arts  
 Prince's Foundation  
 Priority Sites Ltd  
 Project 5  
 Punjabi Maehfil  
 Purlin Project  
 QED  
 Quadrant Pact Board  
 Quadrant Participation Project  
 Queens Road B Allotment Association  
 Queensbridge United AFC  
 Queensbury 18th Bfd Scout Group  
 Queensbury Bell Ringers  
 Queensbury Club for the Handicapped  
 Queensbury Community Association  
 Queensbury Community Programme  
 Queensbury Cricket Club  
 Queensbury Juniors  
 Queensbury Juniors ARLC  
 Queensbury Juniors ARLFC  
 Queensbury School  
 Queensbury Support Centre  
 Queensbury Tykes Playgroup  
 Queensbury Youth & Community Centre  
 Quencher  
 RAABTHA  
 Rafike  
 Railtrack Property  
 Ramblers Association  
 Ravenscliffe & Greengates Community Forum  
 Ravenscliffe AFC  
 Ravenscliffe Community Association  
 Ravenscliffe Enterprise Girls Group  
 Ravenscliffe NHO  
 Ravenscliffe Y & C Centre  
 Ravenscliffe Youth & Community Centre  
 Rawson Square Residents Association  
 RCDP  
 RCDP  
 Red Beck Vale Neighbourhood Watch  
 Reevy Hill Primary School  
 Regen 2000  
 Relay Recruitment Rovers  
 Respite Care Unit  
 Rev Paul Hackwood  
 Rev Sarah Groves  
 Rev. John Nowell  
 Reverend Kevin Tromans  
 Revolution Show Corps  
 Richards & Co  
 RippleDay Treatment & Rehabilitation Centre  
 Robinson Architects  
 Robinson Consulting Engineers  
 Roshni Womens Group  
 Rotary Club of Bingley  
 Rotary Club of Bingley and Airedale  
 Rotary Club of Shipley  
 Rowan Avenue Neighbourhood Watch  
 Royal Town Planning Institute  
 Royds Community Association  
 Royds Healthy Living Centre  
 Royds Junior Rugby Club  
 Royds Rugby Club  
 Royds Rugby League Club  
 RSPB (Northern England region)  
 Runnymede Court  
 Runnymede Court Social Club  
 Russell Hall Primary School  
 Ryecroft Community Centre  
 Ryecroft Primary School  
 S & R Carpets  
 SAFE Project  
 Safer City - Bradford & District  
 Saltaire Cricket Club  
 Saltaire Village Society  
 Salvation Army  
 Salvation Army Mans Hostel  
 Sandale Walk Community Centre  
 Sanderson & Weatherall  
 Sandy Lane Parish Council  
 Sangat Centre  
 Scholemoor  
 Scouts Association  
 SEAFED  
 Sedbergh Youth and Community Centre  
 Sharing Voices Initiative  
 Sherr Guru Ravidas Bhawan  
 Shibden Head Primary School  
 Shipley & Baildon Blind Welfare Assoc  
 Shipley and Baildon Community  
 Shipley and Baildon Volunteer Bureau  
 Shipley and District Horticultural Soc  
 Shipley CABGilstead Village Society  
 Shipley College Library  
 Shipley Red Cross  
 Shipley Salvation Army  
 Shipley Sure Start  
 Shipley Volunteer Bureau  
 Shipley Women's Aid  
 Shipley/Baildon Save the Children Fund

Shirley Manor Primary School  
 Shop Mobility  
 Shree Krishna Community Centre  
 Signpost Project  
 Silsden Town Action Group  
 Silsden Town Council  
 Simon Estates Ltd  
 Slackside Parent and Toddler Group  
 SNOB  
 SNOOP  
 Social Services Services to Children  
 Society for the Protection of Ancient Buildings  
 Soldiers and Sailors Association  
 South and West Bradford Support Group  
 South Asian Females Empowered (SAFE)  
 South Bradford Ladies Football Club  
 South Pennines association  
 South Pennines Packhorse Trail Trust  
 Southmere Primary School  
 Spawforth Planning Associates  
 SPEED Project  
 Sport England  
 Springdale Friendship Group  
 Springfield Bike Project  
 Springfield Junior Youth Drama Group  
 Springfield Surgery  
 Springwood Community Primary  
 Springwood Primary  
 St Aidan's Presbytery  
 St Andrews Church  
 St Andrews Methodist Church  
 St Anthonys RC Church  
 St Augustine's Art Project  
 St Augustines Church  
 St Brendans Church  
 St Clare's Church  
 St Clares Community Centre  
 St Clares Improvement Group  
 St Clares Pastoral Parish Council  
 St Clares Sheltered Housing Complex  
 St Clements Church  
 St Clements Vicarage  
 St Columba's Catholic Primary School  
 St Cuthbert's Church  
 St Francis Catholic Primary School  
 St Francist Catholic Primary  
 St Hugh's Centre  
 St James Securities Ltd  
 St James Wednesday Club  
 St John The Baptist C of E Church  
 St John the Divine  
 St John The Evangelist Catholic Primary  
 St Johns  
 St John's C of E Primary School  
 St Johns Church  
 St John's Church Youth Club  
 St Johns Day Centre  
 St John's Luncheon Club  
 St Johns U R C  
 St Johns United Reformed Church  
 St Luke's CE Primary School  
 St Lukes Vicarage  
 St Mary's Church  
 St Mary's Residents Association  
 St Matthew's C E Primary School  
 St Matthews CE Primary  
 St Matthew's Under Fives  
 St Oswald's CE Primary  
 St Patrick's Church  
 St Pauls Vicarage  
 St Peter's Catholic Primary School  
 St Peters Presbytery  
 St Philip's CE Primary School  
 St Vincent de Paul Society  
 St Wilfrid's Church  
 St William's Catholic Primary School  
 St Winifred's Parent & Toddler Group  
 St Winifrid's Hall Users Group  
 St. John's Luncheon Club  
 St. John's Under Fives  
 St. Mary's Pre School Group  
 St. Matthews Parents Group  
 Star Keys Estate Agents, Valuers and Surveyors  
 Starz Performing Arts Academy  
 Steeton with Eastburn Parish Council  
 Stockbridge Neighbourhood Development Group  
 Stocks Lane Primary School  
 Stocks Lane Rangers Football Club  
 Stonebridge Court  
 Suffa Tul-Islam Assoc.  
 Summer Activities Committee  
 Sunbridge Road Mission  
 Support Team for Deaf Children  
 Support Works  
 Sure Start Manningham  
 Sure Start Project  
 Surestart  
 Surestart BHT  
 Surestart Manningham  
 Surestart Manningham  
 SURF  
 Surti Muslim Khalifa Society  
 Sutton Community Association  
 Sutton Community Centre  
 Sutton-in-Craven Parish Council  
 Swain House Primary School  
 SWG Planning Services  
 Sycamore Court Tenants & Residents Association  
 Taking Time - Memory Workshop  
 Taleemul-Quran Society  
 Telewest Communications  
 TFD Football Club  
 TFD Youth and Community Centre  
 Thackley AFC  
 Thackley Cricket Club  
 Thackley Football Club  
 Thackley Methodist Church  
 Thackley Primary School  
 Thalassaemia & Sicklecell Support Group  
 Prospect Juniors  
 AFC  
 The Albion Inn  
 The Albion Sports Bar  
 The Anchor Project  
 The Award Centre  
 The Balloon & Basket  
 The Blue Pig  
 The Bradford Mentor Group  
 The Brewery Tap  
 The British Horse Society  
 Yorkshire Riding Centre  
 The City Centre Project  
 The Commercial Inn  
 The Coniston  
 The Cricketers  
 The Dog & Gun

The Dominica Association  
 The Emerson Group  
 The Fountain  
 The Garden History Society  
 The Gateway  
 The Gateway Centre  
 The George  
 The Georgian Group  
 The Girlington Centre  
 The Goldsborough  
 The Grange Technology College  
 The Great Northern  
 The Green Man  
 The Greenway Project C/O Duke of Edinburgh Awards Centre  
 The Hare & Hounds  
 The Hitching Post  
 The Hog's Head  
 The Horse & Farrier  
 The Jigsaw Community Project  
 The Junction  
 The Kirkgate Centre  
 The Lane Ends  
 The Leisure Centre  
 The Light of the World Community Centre  
 The Lighthouse Outreach  
 The Link Project Bradford & Airedale Mental Health Advocacy Group  
 The Luncheon Club  
 The Mail Corporation  
 The Malt Kiln  
 The Manor House  
 The Moorfield Centre  
 The New Inn  
 The Old Bell Chapel  
 The Peacemakers  
 The Priestley  
 The Priestley Centre for the Arts  
 The Prince of Wales  
 The Prospect  
 The Prospect Hotel  
 The Robin Hood  
 The Rockwell Centre  
 The Roebuck  
 The Royal Hotel  
 The Royal Oak  
 The Salvation Army  
 The Salvation Army in Wibsey  
 The Salvation Army Over 60's Club  
 The Seven Stars  
 The Shoulder of Mutton  
 The Sikh Temple  
 The Smiling Mule  
 The Springfield  
 The Swing Gate  
 The Theatres Trust  
 The Thornbury Centre  
 The Thursday Club  
 The Tickhill Centre  
 The Twentieth Century Society  
 The Undercliffe Cemetary Charity  
 The Victorian Society  
 The Vine Trust  
 The Wednesday Club  
 The Wellesley Knitting Club  
 Low Moor Primary School  
 PTFAParks Amateur Boxing Club  
 The White Bear  
 The White Hart  
 Thornbury Cricket Club  
 Thornbury Gardens and Allotments Association  
 Thornbury Methodist Church  
 Thornbury Youth & Community Association  
 Thornbury Youth Centre  
 Thornton Community Centre  
 Thorpe Edge Community Forum & RCDP  
 Thorpe Edge Community Project  
 Thorpe Edge Jaguars St Hockey Team  
 Thorpe Edge Women's Self Help Group  
 Thorpe Methodist Church  
 Tong School  
 Tong Sports and Social Club  
 Top Line Cricket Club  
 Tots Unlimited- BD4 Family Centre  
 Touchstone Project  
 Town Hall Women's Guild  
 Tradeforce Buildings  
 Transco (North of England)  
 Transport 2000  
 Trawden Forest Parish Council  
 Trident  
 Trinity Methodist Church  
 Turnaround Project  
 Turner Associates  
 Tyersal Action Group  
 Tyersal FC  
 Tyersal Park Junior Football Club  
 Ukranian Church  
 Undercliffe ARLFC  
 Undercliffe Celtic  
 Undercliffe Celtic Junior Football Club  
 Undercliffe Cricket Club  
 United Co-operatives Ltd  
 Unity Cricket Club  
 UnLtd - The Foundation for Social Entrepreneurs  
 Upper Bolton Conservative Club  
 Upper Thorpe Edge Tenants and Residents Assoc  
 Urban Design  
 Urban Splash  
 User Friendly  
 Usman Welfare Fund  
 V I Sahara Group  
 Ventnor Youth Academy  
 Veteran's Association  
 Vicar Lane Housing Scheme/New Leaf  
 Victim Support  
 Victim Support Bradford District  
 Victor Road Youth Club  
 Victoria Conservative & Constitutional Club  
 Victoria Hotel  
 Victoria Rangers AFC  
 Victoria Rangers ARLFC  
 Vincent and Goring Ltd  
 Vision Academy  
 Visual Disability Services  
 VJ Associates  
 Voluntary Services Centre  
 Wadsworth Parish Council  
 Waggon & Horse  
 Walton & Co  
 Wannabe Performing Arts  
 Wapping Association  
 Waterton Park Asian Golf Society  
 Webb Seeger Moorhouse Partnership  
 Wedgewood & Community Nursery  
 Wedgewood Special School



Wesleyan Reform Church Luncheon Club	Woodside Primary School
West Central Area District Federation	Woodside Village Centre
West Riding Suppl	Working Architects Co-Op Ltd
West Yorkshire Archaeology Advisory	Wrose Community Association
West Yorkshire Division Group	Wrose Community Centre
West Yorkshire Ecology	Wrose Community Centre
West Yorkshire Fire Service	Wrose Parish Council
West Yorkshire Fire Service	WRVS
West Yorkshire LSC	Wycliffe Tenants and Residents Assoc
West Yorkshire Passenger Transport	Wyke Amateur RLC
West Yorkshire Police Crime Prevention	Wyke ARLFC
West Yorkshire Service	Wyke ARLFC
Westbourne Mothers & Toddlers	Wyke Christian Fellowship
Westbourne Primary School	Wyke Christian Fellowship Friendly Club Low Moor and
Westfield Shoppingtown Ltd	Wyke
Weston Parish Council	Wyke Local History Group
Westwood Sports Club	Wyke Manor and Community College
Wharfe Valley Rail Users	Wyke Manor Community Centre
Whetley Primary School	Wyke Manor Community College
White Hart	Wyke Urban Village
Wibsey ARLFC	Wyke Youth Link
Wibsey Jets Football Team	YMCA
Wibsey Local History Group	York House Tenants
Wibsey Primary School	Yorkshire and Humber Assembly
Wibsey Rugby Club	Yorkshire and Northern Cultural Society
Wibsey WMC AFC	Yorkshire British Waterways
Wilsden Good Neighbours Scheme	Yorkshire County Cricket Club
Wilsden Parish Council	Yorkshire Cricket Board
Wilsden Village Hall	Yorkshire Electricity
Wilsden Village Society	Yorkshire Forward Regional Development Agency
Windhill Food Coop	Yorkshire Martyrs Catholic College
Windhill Futures Project	Yorkshire Planning Aid
Women Zone	Yorkshire Union of Golf Clubs
Won Off Wonders	Yorkshire Water Services Ltd
Woodgate Baptist Church	Yorkshire Wildlife Trust
Woodhall Planning and Conservation	Young at Heart
Woodhouse & Springbank NF	Young Muslim Organisation
Woodhouse Grove Methodist Church	Young People's Health Infoline
Woodhouse Grove School	Young Womens Project
Woodlands C E Primary School	Youth Base
Woodlands Cricket Club	Youth Development Project
Woodleigh Rest Home	

### 3.0 LETTER OF INVITE

## City of Bradford Metropolitan District Council

[www.bradford.gov.uk](http://www.bradford.gov.uk)

#### Plans and Performance Service

8<sup>th</sup> Floor Jacob's Well  
Manchester Road  
BRADFORD  
West Yorkshire BD1 5RW

Tel: (01274) 434050  
Fax: (01274) 433767  
Minicom: (01274) 392613  
E-Mail: [ldf.consultation@bradford.gov.uk](mailto:ldf.consultation@bradford.gov.uk)  
My Ref: TDP/P&P/LDF/CS/I&O  
Your Ref:

13<sup>th</sup> April 2007

Dear Sir or Madam,

#### **Bradford District Local Development Framework – Core Strategy Issues and Options Consultation Event**

Bradford Council is currently preparing a Core Strategy this is an important document that will, once adopted, form part of the District's emerging development plan under the new Local Development Framework (LDF). The LDF will eventually replace the current development plan for the area, the Replacement UDP.

The Core Strategy will address the scale and distribution of development across the District over the next 15 – 20 years. In this respect it will set the strategy for the identification of broad locations for new housing, employment, and transport investment, as well as identify broad areas where development should be restrained. (The Core Strategy will not identify specific sites for development, but it will influence how development will be distributed across the District.) The Council is currently consulting on the Issues and Options and has published a series of eight topic papers in order to encourage discussion.

As part of the consultation the Council is holding a number of half-day Area Conferences, to discuss with local groups and other interested parties in more detail, issues relating to their area. You or your organisation have been invited to attend one of the following events:

- **Saturday 19<sup>th</sup> May 2007 at Victoria Hall, Saltaire from 9.00am – 2.00pm**
- **Wednesday 23<sup>rd</sup> May 2007 at Thornbury Centre, Bradford from 9.30am – 2.00pm**
- **Saturday 16<sup>th</sup> June 2007 at Riddings Hall, Ilkley from 9.00am – 2.00pm**
- **Saturday 23<sup>rd</sup> June 2007 at Carlisle Business Centre, Bradford from 9.00am – 2.00pm**

**Lunch and refreshments will be provided.**

Each event will include a number of short presentations to set the background to the new LDF Core Strategy. There will then be a number of workshops where a range of issues can be debated including:

- The scale and location of new development for housing, employment and leisure across the District, and the identification of broad areas where development should be restrained;
- The role of different settlements within the District;

Above all, however, this is an opportunity for those who are involved or have an interest in development planning matters to let us know what issues and policies you think the Core Strategy should be including and addressing.

If you wish to attend this event please fill in and return the enclosed booking form by **Friday the 4<sup>th</sup> May 2007**. Places are limited by the capacity of the venue so please book as soon as possible to avoid disappointment.

Further information on the Local Development Framework is available on the Council's website at [www.bradford.gov.uk/planning](http://www.bradford.gov.uk/planning) by following the Local Development Framework link. Copies of the eight Core Strategy Issues and Options Topic Papers are available online and as reference copies in the Council's Planning Offices at Bradford, Ilkley, Keighley and Shipley. Hard copies of the topic papers will also be made available on request by contacting the LDF Group.

Even if you cannot attend the above event please feel free to send us your comments. The Council welcomes your views and will take these into account when developing the Preferred Options for the Core Strategy. Comments should be made in writing and sent to the following FREEPOST address:

Bradford Local Development Framework  
FREEPOST NEA 11445  
PO Box 1068  
BRADFORD  
BD1 1BR

Alternatively, comments can be marked 'Core Strategy Issues and Options Consultation' and emailed to [ldf.consultation@bradford.gov.uk](mailto:ldf.consultation@bradford.gov.uk). Comments should be received at the very latest by 6<sup>th</sup> July two weeks after the last Area Conference.

**Please note that representations cannot be treated as confidential and a schedule of all representations received will be published**

Should you require clarification on any of the above or further information please contact Andrew Marshall on the number above or my colleague Isha Ahmed on (01274) 434544.

Yours faithfully,



Andrew Marshall  
Group Planning Manager

## 4.0 BOOKING FORM

# City of Bradford Metropolitan District Council

[www.bradford.gov.uk](http://www.bradford.gov.uk)

## CORE STRATEGY STAKEHOLDER CONSULTATION EVENTS

*Bradford Council is currently producing a new strategic planning document, called a Core Strategy that will form part of its Local Development Framework. This crucial document will influence the scale and location of development to be provided for housing, employment, leisure and retail across the district for the next 10 – 20 years.*

If you have an interest or role in shaping the future planning of the district, you are invited to attend one of the following events to discuss the issues and give us your views:

**Saturday 19<sup>th</sup> May 2007**  
**9.00am – 2.00pm**  
**Victoria Hall, Saltaire**

**OR**

**Wednesday 23<sup>rd</sup> May 2007**  
**9.30am – 2.00pm**  
**Thornbury Centre, Leeds Old Road, Bradford**

**OR**

**Saturday 16<sup>th</sup> June 2007**  
**9.00am – 2.00pm**  
**Riddings Hall adjacent to Christchurch, Riddings Road, Ilkley**

**OR**

**Saturday 23<sup>rd</sup> June 2007**  
**9.00am – 2.00pm**  
**Carlisle Business Centre, Carlisle Road, Bradford**

## 1. Your Details

<b>Name:</b>	
<b>Address:</b>	
<b>Organisation:</b>	
<b>Telephone:</b>	
<b>Email:</b>	

## 2. Attendance *(please tick which conference you wish to attend)*

I will be attending the event at Victoria Hall on the 19<sup>th</sup> May

I will be attending the event at Thornbury Centre on the 23<sup>rd</sup> May

I will be attending the event at Riddings Hall, Ilkley on the 16<sup>th</sup> June

I will be attending the event at Carlisle Business Centre on the 23<sup>rd</sup> June

**3. Dietary needs** (Lunch will be provided. Please tell us if you have any special dietary needs)

**4. Any special requirements.** Please list below anything else you may need. We will try our best to meet your needs so that you can fully participate on the day.

## 5. How to book.

To book a place please fill in this form and return to:

Isha Ahmed  
Local Development Framework Group  
8<sup>th</sup> Floor Jacob's Well  
Manchester Road  
Bradford  
BD1 5RW

Or Email: [ldf.consultation@bradford.gov.uk](mailto:ldf.consultation@bradford.gov.uk). Please head your email 'Core Strategy Area Conference'

Alternatively, please ring on (01274) 432253

**Please let us know if you can attend by Friday 4<sup>th</sup> May as places are limited.**

Further details of the conference and a map will be sent to you if you with your booking confirmation. Please note each conference will focus on the issues as they relate to a particular broad area namely; Bradford City, Airedale (and villages) and Wharfedale

## 5.0 DELEGATE LIST

Andrew Marshall	Group Planning Manager, Bradford MDC
Isha Ahmed	Team Leader, Bradford MDC
Jane Scott	Senior Planning Officer, Bradford MDC
Michelle Greenwood	Planning Officer, Bradford MDC

C Barton	Transport 2000
Tony Burkitt	Ramblers Association
Cllr George Edge	Keighley Town Council
Mary Hamilton	Ilkley Council for Voluntary Services
Cllr Paul Hesettine	Keighley Town Council
Cllr Caroline Jones	Burley in Wharfedale Parish Council
Cllr Peter Jenkins	Burley in Wharfedale Parish Council
Helen Kidman	Ilkley Civic Society
Sandy MacPherson	BRAG and 'Save us Pub'
Cllr Andrew McKie	Ilkley Parish Council
Rachel Pierce	Sanderson Weatherall
Wilfred Shaw	Ilkley Design Statement Group
Stephen Shorten	Keighley Community Transport
Tracey Smith	Braithwaite and Guardhouse Community Association
Alison Widdup	Addingham Parish Council
Peter Yates	Bradford Rail Users Group

## 6.0 EVENT PROGRAMME

**City of Bradford Metropolitan District Council**

[www.bradford.gov.uk](http://www.bradford.gov.uk)

**LOCAL DEVELOPMENT FRAMEWORK  
CORE STRATEGY  
ISSUES AND OPTIONS CONSULTATION EVENT**

**PROGRAMME**

**16 June 2007**

**RIDDINGS HALL, ILKLEY**

<b>9.00</b>	<b>Registration and Refreshments.</b>
<b>9.30</b>	<b>Welcome and Introduction:</b> Andrew Marshall (Group Planning Manager) setting out the aims of the event and proceedings
<b>9.35</b>	<b>What is a Core Strategy:</b> Andrew Marshall (Group Planning Manager) Short presentation introducing the Local Development Framework and Core Strategy. Including short DVD presentation
<b>9.50</b>	<b>Questions and Introduction to Workshops</b>
<b>10.00</b>	<b>Workshop Session 1:</b> Developing a vision for the Bradford District. Your chance to discuss what you think are the important planning issues facing the district. Have we identified the right issues? Have we missed any?
<b>10.45</b>	<b>Refreshments break.</b>
<b>11.00</b>	<b>Workshop Session 2:</b> Your chance to discuss the key housing and employment issues facing the District and potential approaches to them. This workshop will be based around the location of development and the roles of different settlements in meeting housing and employment land needs. It will also provide the opportunity to discuss the implications of any potential approach.
<b>12.30</b>	<b>Feedback from workshop session 2</b>
<b>12.45</b>	<b>Summary and where next:</b> Andrew Marshall will summarise key issues raised on the day and set out the next steps in developing the LDF Core Strategy.
<b>13.00</b>	<b>Lunch</b>



## 7.0 POWERPOINT PRESENTATION

City of Bradford Metropolitan District Council

[www.bradford.gov.uk](http://www.bradford.gov.uk)

### BRADFORD LOCAL DEVELOPMENT FRAMEWORK

#### CORE STRATEGY – ISSUES & OPTIONS

**Airedale Stakeholder Event**

**19 May 2007**

**Victoria Hall, Saltaire**

**Department of Regeneration**

City of Bradford Metropolitan District Council

[www.bradford.gov.uk](http://www.bradford.gov.uk)

### Welcome and Event Outline

City of Bradford Metropolitan District Council

[www.bradford.gov.uk](http://www.bradford.gov.uk)

### Event Outline

- 9.30 Welcome and Introduction: Andrew Marshall (Group Planning Manager)
- 9.35 What is Core Strategy? Andrew Marshall (Group Planning Manager)
- 9.50 Questions and Introduction to workshops
- 10.00 Workshop Session 1. Developing the Vision
- 10.45 Refreshments break
- 11.00 Workshops Session 2 Meeting Development Needs
- 12.30 Feedback from workshop session 2
- 12.45 Summary and where next
- 13.00 Lunch

City of Bradford Metropolitan District Council

[www.bradford.gov.uk](http://www.bradford.gov.uk)

### Event Aims and Objectives

- Raise awareness of the Local Development Framework in particular the core strategy and why it is important.
- Engage with local groups and organisations to explore the key issues facing the district over the next 10-20 years and the possible options for tackling them.

City of Bradford Metropolitan District Council

[www.bradford.gov.uk](http://www.bradford.gov.uk)

## Event Aims and Objectives

Participation and engagement which ensures as far as practical the Core Strategy:

- Reflects the needs of the district and its communities
- Is technically robust and based on sound information
- Enjoys a broad consensus

City of Bradford Metropolitan District Council

[www.bradford.gov.uk](http://www.bradford.gov.uk)

## What is the Core Strategy?

City of Bradford Metropolitan District Council

[www.bradford.gov.uk](http://www.bradford.gov.uk)

## Why is it Important? (DVD)

City of Bradford Metropolitan District Council

[www.bradford.gov.uk](http://www.bradford.gov.uk)

## Presentation Themes

- Local Development Framework for Bradford
- The Process
- Core Strategy
- Current Consultation

**City of Bradford Metropolitan District Council**  
[www.bradford.gov.uk](http://www.bradford.gov.uk)

**Local Development Framework for Bradford**

- **Adopted Replacement Unitary Development Plan (October 2005)**
- **Local Development Scheme for Bradford (Revised March 2007)**
- **Key Documents**
  - Core Strategy
  - Allocations (housing, employment and safeguarded land)
  - Open Space
  - City Centre Area Action Plan
  - Waste

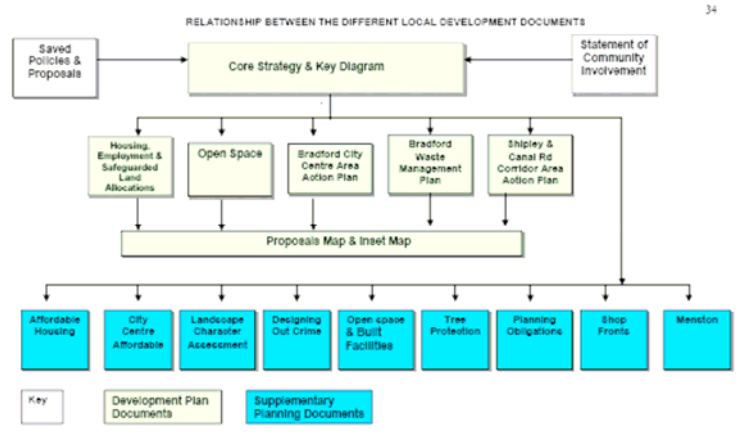
**City of Bradford Metropolitan District Council**  
[www.bradford.gov.uk](http://www.bradford.gov.uk)

**Local Development Framework for Bradford**

**Regional Spatial Strategy for Yorkshire and the Humber:**

- Sets out the broad approach to development and change in region
- Identifies the role of Bradford in Leeds City Region
- Sets the number of houses Bradford should provide for

**City of Bradford Metropolitan District Council**  
[www.bradford.gov.uk](http://www.bradford.gov.uk)



**City of Bradford Metropolitan District Council**  
[www.bradford.gov.uk](http://www.bradford.gov.uk)

**LDF Process**

**Key stages of LDF preparation:**

- Pre production
- Issues and options
- Preferred options
- Submission
- Examination
- Binding Report
- Adoption

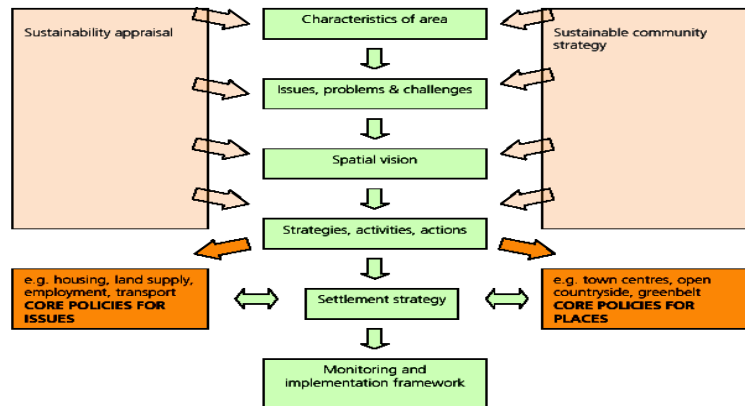
### Core Strategy

- First DPD sets out the ‘big picture’ through a spatial picture and vision
- Other LDF documents deliver a detailed approach in line with Vision, strategy and Core Policies
- Not site specific but needs to broad locations of development, change and restraint etc
- Succinct written statement with spatial policies supported by a key diagram

### Core Strategy

- **Executive Report 6 February 2007**
- **Set of 8 Topic Papers**
  1. Introduction and Background
  2. The Spatial Vision and Strategy for Bradford
  3. Meeting the needs for dwellings in the District
  4. Economy and Jobs
  5. Transport and Accessibility
  6. Community Facilities
  7. Environment
  8. Waste Management

figure 1: core strategy key elements



### Vision (Part 1)

A sustainable District which ensures the well being of its residents and visitors through:

- A vibrant high skill economy fully integrated with the wider city region and northern economy focused on delivering the potential of the city of Bradford and Airedale and spreading those benefits to the whole district.
- Enhanced role of Bradford City as the key regional centre with the city centre a thriving sub-regional shopping, commercial and transport hub with a balanced and strong district wide economy

## City of Bradford Metropolitan District Council

[www.bradford.gov.uk](http://www.bradford.gov.uk)

### Vision (Part 2)

- A Well connected District where everyone has access to decent affordable housing, jobs, health and community facilities.
- Continued protection and enhancement of its natural environment, heritage and diversity through high quality development and land management
- High quality new development, which contributes to the renaissance of the district which reinforces and builds on the existing character and promotes sustainable design

## City of Bradford Metropolitan District Council

[www.bradford.gov.uk](http://www.bradford.gov.uk)

### Consultation Process

- **Area Stakeholder Conferences (May/June)**
  - Airedale (19<sup>th</sup> May)
  - Bradford (23<sup>rd</sup> May and 23<sup>rd</sup> June)
  - Wharfedale (16<sup>th</sup> June)
- **Topic Stakeholder conferences**
  - Housing (22<sup>nd</sup> March)
  - Transport (28<sup>th</sup> June)
  - Waste (30<sup>th</sup> March)
  - Economy and jobs (linked to Economic strategy)

## City of Bradford Metropolitan District Council

[www.bradford.gov.uk](http://www.bradford.gov.uk)

### Consultation process

- **6 weeks from 16 February to 30 March (extended)**
- **Targeted consultees**
- **Partnerships and networks**
- **Difficult to reach groups**

## City of Bradford Metropolitan District Council

[www.bradford.gov.uk](http://www.bradford.gov.uk)

### Questions

City of Bradford Metropolitan District Council

[www.bradford.gov.uk](http://www.bradford.gov.uk)

## Introduction to Workshops

City of Bradford Metropolitan District Council

[www.bradford.gov.uk](http://www.bradford.gov.uk)

## Where Next?

- **Record and consider consultation feedback**
- **Consider new evidence**
  - Local Housing Assessment
  - Urban Potential Study
  - Flood Risk Assessment
  - Employment Needs Assessment
- **RSS Panel Report and Modifications**

City of Bradford Metropolitan District Council

[www.bradford.gov.uk](http://www.bradford.gov.uk)

## Where next?

City of Bradford Metropolitan District Council

[www.bradford.gov.uk](http://www.bradford.gov.uk)

## Where Next?

- **Feedback Workshops (Autumn)**
- **Refined development Options (Autumn)**
- **Preferred Options (January 2008)**
  - Identify chosen approach
  - Set out reasons for discounting other options
- **Housing and Employment Allocations DPD**
  - Issues and Options Spring 2008

City of Bradford Metropolitan District Council

[www.bradford.gov.uk](http://www.bradford.gov.uk)

## Web Information

- **Council general planning**  
[www.bradford.gov.uk/planning](http://www.bradford.gov.uk/planning)
- **Bradford Local Development Framework**  
[www.bradford.gov.uk/environment/land\\_and\\_premises/local\\_development\\_framework/](http://www.bradford.gov.uk/environment/land_and_premises/local_development_framework/)
- **Department of Communities and Local Government**  
<http://www.communities.gov.uk/>
- **Planning Advisory Service**  
[www.pas.gov.uk](http://www.pas.gov.uk)

City of Bradford Metropolitan District Council

[www.bradford.gov.uk](http://www.bradford.gov.uk)

## Contact Information

- **Local Development Framework Group**
  - [local.development.framework@bradford.gov.uk](mailto:local.development.framework@bradford.gov.uk)
  - [ldf.consultation@bradford.gov.uk](mailto:ldf.consultation@bradford.gov.uk)
  - 01274 434050



## 8.0 PROMPT SHEET

### Workshop Session 1 – Prompt Sheet

The facilitator should ask all delegates to briefly introduce themselves (i.e. name, the organisation they represent and what their interest is in planning).

The facilitator should state that their role is to encourage debate and to inform the group that a note will be taken of the meeting - but that this will be a general note and not attributable to individuals.

### Developing a Vision for the Bradford District

The aim of this workshop is for delegates to give their views on the planning issues that should be contained within the Core Strategy spatial vision.

The following issues have been placed on cards as a series of ‘unloaded’ headers, with the aim of group’s ranking each according to whether they feel they are of high or low importance. Each card will need to be ranked on an A0 foam board. The cards are of the big issues facing the district and are what we think the document should be tackling. The cards are of big issues and are as follows:

- Growing local economy
- Socially inclusive and vocal communities
- Choice of housing opportunities
- Role of the City Centre
- High quality design
- Historic and the natural environment
- Access to public transport
- Transport infrastructure investment (connections within and outside district)
- Role of Regeneration
- Role of the Green Belt
- Access to leisure and recreation
- Access to housing, employment, shopping, health, culture and education
- Climate change
- Sustainable waste management
- Natural and renewable resources

(The above list has been lifted from section 4, Para 4.4 of Topic Paper 2)

Delegates should be encouraged to add any issues that they feel we have missed.

Ask questions such as:

Q. What does this issue mean to you in terms of Bradford?

Q. How important is this issue?

Q. Have we missed any issues that you think are important and should be included?

At the end of the workshop a digital photo will need to be taken of the board – as it will be used again at the other events.



## Workshop Session 2 – Prompt Sheet

### Location of Development & The Role of Settlements in Meeting Needs for Employment & Housing

The aim of this workshop is for delegates:

- a) To devise an approach to locating development for housing and employment across the district, and
- b) To think about the role that each settlement will play in meeting needs for housing and employment.

In this workshop delegates will be asked to place counters on an A0 foam board. For housing, each colour counter represents a different number of houses. Housing counters should tally up to approx 31,000<sup>1</sup> dwellings. (31,000 dwellings + housing requirement figure in draft RSS to 2021)

In terms of employment, the RSS recognises Bradford as one of the main drivers in delivering a growing regional economy. E.g. each day more people travel to Bradford district to work then leave to work elsewhere. Over 80% of firms within the district are smaller, made up of 10 employees or less. Employment counters are of various colours these refer to the no of employees and do not need to tally, as there is no specific requirement for employment.

### Location of Development

The facilitator should introduce the workshop by referring to the 31,000 dwellings. The aim of the workshop is to come up with an approach on how these should be distributed across the district,

The facilitator does not need to go into each of the spatial strategy options identified in Topic Paper 2, Section 5, para 5.10 – 5.14 when introducing the workshop, as this would be steering the debate. However on a personal level the facilitator will need to know the Core approach<sup>2</sup> (para 5.11). This states that development should be:

- **Focused within Bradford City, Shipley & Baildon** – due to good transport connections.
- **Larger settlements in Airedale (Keighley, Bingley & Silsden)** – Focus for economic development and limited residential development to meet local needs.
- **Larger settlements in Wharfedale (Ilkley, Menston, Burley)** – limited economic developments and limited residential developments to meet local needs.
- **Other well located larger settlements on the urban fringe (Queensbury, Thornton)** – limited economic development and limited residential developments to meet local needs.
- **Small less well-located villages (Cullingworth, Wilsden & Oxenhope etc)** – limited economic development and limited residential development to meet local needs.
- **Priority in all above cases to previously developed land unless a Greenfield location is more sustainable.**

<sup>1</sup> Please note that this figure is likely to rise, in the final RSS, by an extra 3,000 dwellings based on more recent population projections.

<sup>2</sup> The Core Strategy Preferred Option may have apportionments for housing in each of the above areas as this appears to be the approach that the Government Office is promoting.

The facilitator should get delegates to think about all the above areas in meeting needs for housing and employment and not just their own locality.

**Option A – C** (para 5.13) are variations of the Core Approach. Briefly,

Option A – Focused Dispersal

- Focus development in main urban area of Bradford (intensification)
- Development on allocations in lower order settlements with good transport infrastructure
- Use of safeguard land

Option B

- All settlements make provision to meet district's needs

Option C

- New development focused in key locations potentially involving substantial changes to the Green Belt.

Role of Settlements

Delegates should be asked to think about the role of settlements in meetings needs for housing and employment. The following location principles could be used as a guide:

- Should the majority of development take place in the existing built up main urban area?
- Should smaller settlements on good transport routes provide a commensurate level of development?
- Should development in less well-located smaller settlements be limited to meet local needs?
- Accessible locations for new development
- Priority to previously developed over Greenfield land.

Once delegates have come up with an approach the facilitator will need to discuss the implications of such an approach. For example,

- If some settlements have no housing development this will have implications for affordable housing, local 1<sup>st</sup> time buyers may have to move away, etc.
- Green Belt releases on edge of main urban area if Bradford is chosen as the only location.
- Should employment land be allocated/continue to be protected within villages?

At the end of the workshop a digital photo will need to be taken of the board – as it will be used again at the other events.

## 9.0 FACILITATORS NOTES

<b>WORKSHOP SESSION:</b>	<b>Key Issues</b>
<b>TIME:</b>	<b>10.00 to 10.45</b>
<b>GROUP:</b>	<b>A</b>
<b>FACILITATOR:</b>	<b>Andrew Marshall</b>
<b>NOTE TAKER:</b>	<b>Michelle Greenwood</b>

- Point on timescales – housing goes to 2018, LSP to 2020 and adopt LDF 2011 to 2031 – there is no alignment between timescales
- Planning system is under review and may change before this LDF process is complete – is the LDF process the driver of change will it coordinate changes to all other planning documents.
- Is it established that Leeds is going to be the regional capital? – we are currently working on a regional basis in which Bradford has an important role to play. Leeds City Regional Development Plan will be produced to deal with things like investment structure. The RSS is looking at Leeds being Regional name.
- Bradford at crossroads, National Government are looking to see how Bradford is doing if Bradford fails then opinion is that the area will be governed from Leeds or maybe in future go back to working as we did under WYCC.
- Energy use and resource is very important and in key issues should be a priority. Cost of energy will continue to rise.
- People should be encouraged to build in a sustainable way right now – not wait 5 years for plan to be adopted.
- What renewable energy sources has Bradford Council looked at – i.e. wind power – keep centralised production of energy but should look at localised sources in future.
- A study was carried out 4 years ago in district to look at renewable energy sources.
- Hydro potential from rivers and their weirs – would not be strong enough to power Bradford but could be used to operate lighting systems for the district. This potential can be put to use quite easily.
- Photovoltaic genetic? Roof tiles have been proposed and should be encouraged.
- Energy efficiency is just as important as where and how we produce energy.
- All new build including extensions to existing buildings should be energy efficient.
- Demand for renewable energy sources will bring the cost of using it down.
- Problem with climate change is that we do not know the outcome will we freeze or warm- up? So not sure how to plan for climate change.
- Climate change film and information should be given to all schools as well as being made available and promoted throughout whole district.
- The housing, employment, shopping, leisure, culture and education card covers everything – is it meant to? (refer to exercise done during this workshop).
- The cost of housing is a big problem that will lead to other problems in future such as homelessness, need for hostels and temporary accommodation and maybe even problems with the health of people in the District.
- Agricultural land in the Wharfe Valley is very important; it forms the green belt, is well used and should be protected.

- Aire Valley Green Belt forms part of the flood plain and should not be built on
- The green belts role should be to stop settlements merging into one another.
- Should intensify housing within urban areas to protect the green belt.
- Burley is full to capacity when considering Doctors, Schools and transport – Burley has taken more than its fair share of residential development in recent years and not sure that it would be fair to take more.
- Staggered work times would solve some congestion issues.
- AVTR until complete it may as well be a cul- de sac.
- Completing the AVTR is not sustainable and will lead to increase in use of oil and rubber tyres. Train systems should be the way forward- single-track railway systems can be the answer as long as they are managed properly.
- Transport throughout Bradford is not managed properly and traffic-calming problems do not solve wider issues.
- Reducing road widths does not ease congestion and creates longer delays and dangers to pedestrians.
- There is a shortage of housing appropriate for older people in places where they are willing to live.
- Lots of small houses being built in the Wharfe Valley but the prices are too high.
- Affordable housing is not taken seriously; numbers are reduced to avoid building them.
- If built it is difficult to retain houses at affordable prices.
- Should look to Coin Street model – this has managed to retain affordable housing.
- Heat pumps should be essential elements in all new build houses.
- LSP is not available to Ilkley
- Employment should be kept in Bradford
- Don't agree with Ilkley being classed as a dominant town
- Public transport needs to be of high importance
- Planning is least accessible Council Service – new system does not involve Barristers when giving evidence – people can speak out at Public Inquiries.
- Why is waste being shipped out of Bradford District? Bradford is landfilled to capacity.
- Landfill causes pollution but is one way to stop waste leaving the District.
- Group wanted to add work life balance card to the board being used for the workshop.



Core Strategy Issues &amp; Options – Wharfedale Stakeholder Event Report

<b>WORKSHOP SESSION:</b>	<b>Key Issues</b>
<b>TIME:</b>	<b>10.00 to 10.45</b>
<b>GROUP:</b>	<b>B</b>
<b>FACILITATOR:</b>	<b>Isha Ahmed</b>
<b>NOTE TAKER:</b>	<b>Jane Scott</b>

#### Growing the local economy

- This is of fundamental importance.
- Work brings many positive benefits to an individual's life, particularly self-respect. It should not be optional for the young and healthy.
- The 'grey economy' is an issue in Bradford.
- Improving the skills of the population is important.
- Employers also have a responsibility to improve the skills of the workforce (perhaps improving English language skills).
- Support should be given to existing businesses as well as training people to be self-employed.
- Bradford needs to attract employers who need a highly skilled workforce.
- Bradford cannot provide skilled employees with good IT knowledge to support these companies.
- 2020 vision is very aspirational in terms of workforce skills, but we are a long way from this position.
- Has Manningham dropped off the planning agenda or has it only slipped in terms of time scale.
- Lack of access to training and child-care facilities can have an impact on employment opportunities.

#### Choice of housing opportunities

- Should a wider range of people have the choice of buying a house in Ilkley?
- However there are relatively few people in need of housing who both live and work in Ilkley.
- People may have relatives or social commitments in the area.
- Should everyone who wants to live in Ilkley have that right or only the above plus those who can afford it?
- What is the role of Ilkley? If it were to provide housing for all those who wish to live there, then it would cease to provide such an attractive environment to visit on a day out from the more urban areas that are closer to facilities.
- Empty council accommodation due to high levels of anti-social behaviour.
- Affordable housing is one of the most important issues to get right.

#### Role of the City Centre

- There is a need for family housing in suburban areas of Bradford District. Only certain numbers of people will wish to live in high density housing in the city centres, which the Council is promoting.
- However if investment is directed to suburban areas only the urban centres will decay further, so there needs to be both.

#### Access to leisure and recreation

- This is also important as a lack of leisure and recreation facilities can lead to young people being bored and to high levels of anti-social behaviour.

#### Socially inclusive and vocal communities

- Local communities need to be consulted so that their needs can be made known.

#### Climate Change

- There was a desire to know more about what climate change means for the local area.

#### Natural and renewable resources

- Some awareness of potential changes in permitted development rights relating to microgeneration equipment for householders
- A number of the group were in favour of siting large wind turbines in open countryside and others were strongly opposed to this, believing them to be relatively ineffective and visually intrusive.

#### Sustainable waste management

- Again there was agreement that waste management is important and that local initiatives in recycling should take place.

#### Role of the Green Belt

- The Green Belt is being eroded by incremental change and the group were strongly opposed to this. The Green Belt should be sacred, particularly in areas like Bradford District where the landscape is generally of a high quality and has very positive qualities.
- Under what circumstances should the Green Belt be released. These need to be carefully prescribed and the public should be consulted.

#### Transport

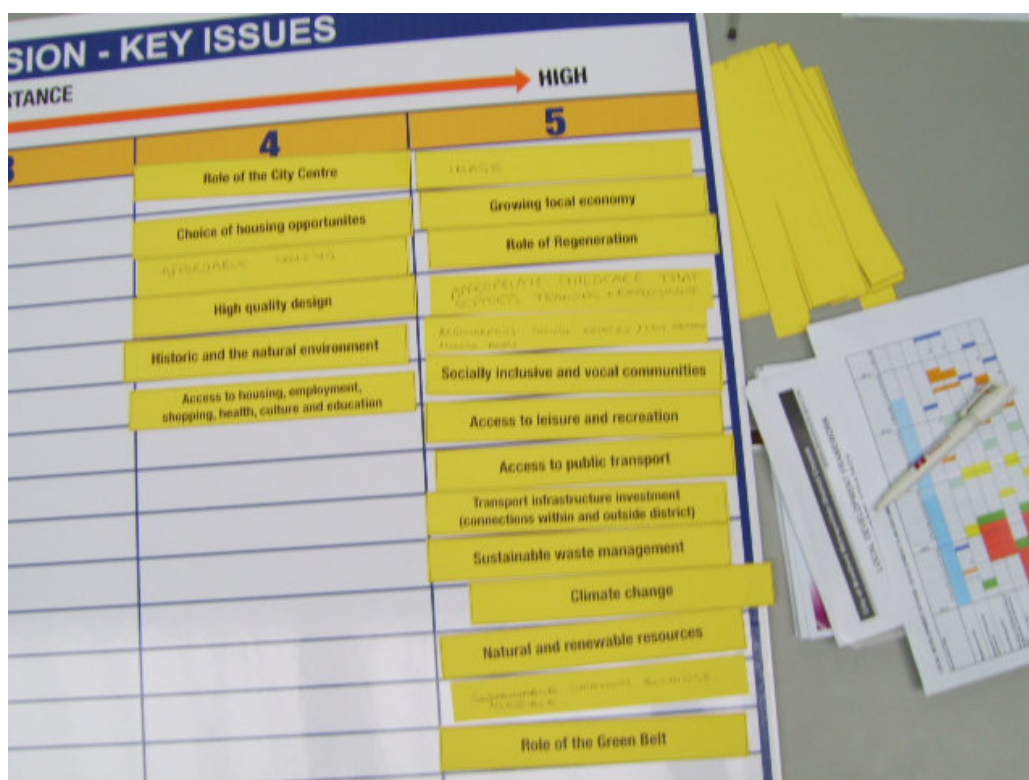
- The Leeds vision for transport seems to put forward very few improvements for the next 20 years.
- Is park and ride the answer? Or guided buses?
- Inadequacy of public transport in Addingham. But where should routes go?
- Access to community buildings needs to be thought through carefully so that these can serve community needs.
- Should the Green Belt be released to support park and ride facilities?
- Should consideration be given to the re-opening of former disused railway lines or has there been too much development over these since they closed? E.g. a route between Ilkley and Skipton.

#### Historic and natural environment

- This is an important part of marketing the district to encourage new businesses and people to locate here.

#### Role of the city centre

- Disengagement from Bradford city centre of the communities of Keighley, Addingham and Ilkley.
- Why would anyone go to Bradford?
- Do people not go due to lack of transport links or lack of a desire to go there?
- What is the problem with Bradford's image?
- Is it due to a lack of pride in the place?
- Are image problems due to internal perception of the place or external perception?



**WORKSHOP SESSION:** Location of Housing and Employment  
**TIME:** 11.30 to 12.30  
**GROUP:** A  
**FACILITATOR:** Andrew Marshall  
**NOTE TAKER:** Michelle Greenwood

- Do we supply all demands i.e. do we supply 3 bed houses to single people.
- 100 starter homes could be added to Burley in Wharfedale but would not like to see another 100 3 to 5 bed detached or family homes.
- Putting in smaller houses will make schools more sustainable
- Need to put houses in all villages throughout the district to meet needs of people growing up and wishing to stay.
- Large houses in Wharfedale sell but don't make for a balanced community
- If you want people from Ilkley to work within Ilkley then a lot more affluent jobs will have to be provided within the town.
- Wharfedale needs affordable housing
- Wharfedale has taken its fair share of windfall housing developments at the loss of other uses such as nursing homes, community uses and schools.
- There are no mills to convert in Ilkley
- Should look at vacant property first, and ensure polices to bring back into use, and then look to conversion of non-residential properties and then to brownfield.
- Need to put houses where they are accessible to jobs
- Should reintroduce railway routes that where taken away in past. Network rail and council should CPO all dismantle railway routes so they can be brought back into use as transport corridors.

- Should reduce need to travel in first instance
- Should provide house to enable people to work from home
- Congestion at Shipley/Saltaire – studies needed into the railway usage of area
- Forster Square station has large capacity not being used to full potential
- Apperley Bridge rail link needs to be brought forward
- Canal through the Aire Valley is not used and does have capacity
- Railways should be used for urgent freight and canals for non urgent freight.
- Trains and buses do not run on time and are dirty and not used properly
- Need to make transport more efficient or take away the need for people to travel
- Smaller settlements need to be kept self sufficient and sustainable to reduce the need for daily commute.
- Employment these days has changed people travel to offices further afield whereas in the past people worked in mills next to where they lived or within 10 minutes of home so they walked.
- Modern techniques such as video conferencing from home will enable people to travel less for work
- Rail electrification is being promoted in the northern city region.
- Ideal aim would be to run all transport systems on electricity
- It's ok to concentrate people into city but still have the access out of city in to countryside.
- Don't think we should force people to live in the city centre or even in apartments. People need a choice of where to live. People will only live in Bradford city centre if it is made attractive and has things like open space and parks.
- Further education needs to be accessible to get people the skills they need.
- Further education may not be in colleges but could be done through electronic system.
- Centres of high population in the district need jobs to create inspiration for young people growing up otherwise they will not make the best use from the schools and education system.
- Deprivation is not just in city centre but throughout the district.
- Workforce needs to match jobs available, as does education and training.
- New businesses need acknowledgement and support to keep them in the district.
- BME community supplies a lot of entrepreneurs setting up new businesses.
- Link the two Bradford rail stations together.
- Should use congestion charges to discourage people from travelling by car
- People like to travel by car and are prepared to sit in traffic jams to get where they are going
- The train runs to Steeton but then there is no access to AGH therefore people going to visit hospital have to go by car.
- Could build on Brownfield sites in the green belt such as Esholt
- The south Pennines should be protected from development
- Tourism supports jobs
- People should holiday nearer to home to cut down on travelling
- We need to consider the type of skills we wish to promote we will always need plumbers and electricians who usually learn their trade on the job rather than attending college or university – not everyone will be able to follow an academic career or even want to
- Skills need to be transferable between different employment sectors



- We will need to expand all settlements throughout the district to achieve the 31000 new dwellings unless we plan for a new town somewhere in the district
- Developers have already bought up areas of land in the greenbelt in anticipation of future land releases and eventual planning permissions
- Presumption in favour of developments has been around for years and developers are better at forecasting where land releases will be made than the people who make them
- Ilkley is a town which could take a lot of new houses expansion of this town would be straight forward and it is a very desirable place to live
- Yes we should encourage development where people actually want to live and I don't think that it is in the city centre
- Villages need to put their views forward through parish plans and VDS
- Cannot specify who will buy and move into new developments



**WORKSHOP SESSION:** Location of Housing and Employment  
**TIME:** 11.30 to 12.30  
**GROUP:** B  
**FACILITATOR:** Isha Ahmed  
**NOTE TAKER:** Jane Scott

The introduction explained the rationale behind the need to find land for housing.

- The group struggled to accept the basis on which housing need is calculated / assessed.
- Surely there is a difference between desire and demand. If people are not working within an area, then how can they be accepted as needing housing.
- Why do we have to accept the housing figures from the region, when the assembly is unelected?

If we do not accept the regional figures, then we will run out of land and applications may have to be accepted in the Green Belt, if no alternative provision has been made.

- A need to CPO unused brownfield land in Manningham was identified.
- The issue of empty council properties was also raised.

Such issues have been factored into the figures already.

Where should employment land go?

- Put more employment land in the M606 area, although it was argued that this could benefit adjoining districts, particularly people living in Kirklees as much as Bradford residents.
- Attracting employment uses along the Airedale Corridor is important for Bradford as this is more central to the district.
- Employment land needs to be allocated in locations close to where land is released for housing.
- People need to want to work at the jobs available in a particular area.
- Unemployment can become an issue for generations of families.
- Having a debate around the role of immigrant workers is important.
- Should employment land be allocated in areas with a limited workforce?
- There may be opportunities for tourism in the smaller villages.
- Should we retain employment sites within more rural areas, particularly where there is pressure for more housing in these areas.
- There is a need for a small industrial estate in Ilkley.
- Should Ilkley be a dormitory town?
- Achieving a reward for work versus the level of benefits was raised again, but this is a national issue.
- Efforts should be made to retain small businesses (ie an appropriate scale of employment) in the villages.
- Small businesses are essential to the Bradford economy, otherwise whether employment continues in a location would be at the whim of whoever controls large business empires.
- It is therefore better to look to accommodating the needs of SMEs.

Land for housing?

- How do we accommodate the aspirations of people who wish to move out of the city centre?
- There was strong agreement to using brownfield land first.
- In terms of any additional land releases, (provided sufficient justification has been made), growth should be accommodated where the need is generated. If inner city Bradford is where the young population lives, then this is where land should be released.
- Put counter-arguments to the regional assembly and government on housing figures.

- There should be more community involvement.
- What is the role of the forthcoming economic strategy in this process?
- Has the community view informed the economic strategy or just that of the business community?
- Consultation should have been done earlier with the community on the economic strategy.
- Other plans should follow from the economic strategy as this is the key starting point.
- M606 corridor will not necessarily create jobs for Bradford residents. This may be the cause of in-commuting.
- Bradford badly needs to re-invent itself, as have Leeds, Manchester and Sheffield, but it has been slow to do this.
- Jobs should go into the Airedale Corridor, but links to the rest of the district need to be better.
- SMEs are more sustainable as they are not going to move abroad and it is not so devastating if they close.
- The core strategy should identify land where serviced business estates could go.
- Although some sites for larger companies are needed.

#### Need for housing

- There is a need for affordable housing in Bradford but how is this defined and who is going to provide this? Should affordability define where people live? Few areas of Bradford are affordable to most people. Affordable housing is only achievable by providing market housing.
- Greenfield and particularly green belt land should not be taken without greater knowledge of other sources of land and another round of public consultation at this time.
- Have trailer parks been considered as a possibility?



## 10.0 EVALUATION FORM

### LDf CORE STRATEGY – ISSUES AND OPTIONS STAKEHOLDER CONSULTATION EVENT

Please spend sometime to fill in the form below. Your feedback will help us to improve future events. Thank you.

#### Presentations/ Speakers

Was the level of detail provided appropriate?

1 = not enough detail and 5 = too much detail (please circle)

1                      2                      3                      4                      5

Were the presentations an appropriate length?

1 = too short and 5 = too long (please circle)

1                      2                      3                      4                      5

Please rate the overall quality of the presentations and speakers

1 = poor and 5 = excellent (please circle)

1                      2                      3                      4                      5

Was the content of the DVD appropriate for the event?

1 = not enough detail and 5 = too much detail (please circle)

1                      2                      3                      4                      5

#### Workshop Sessions

Were the workshops an appropriate length?

1 = too short and 5 = too long (please circle)

1                      2                      3                      4                      5

Please rate the overall quality of the facilitators

1 = poor and 5 = excellent (please circle)

1                      2                      3                      4                      5

#### Organisation

Please rate the overall organisation and management of the event on the day

1 = poor and 5 = excellent (please circle)

1                      2                      3                      4                      5

Please rate the communication and background material provided leading up to the event

1 = poor and 5 = excellent (please circle)

1                      2                      3                      4                      5

**Venue**

Was the venue convenient and easy to get to?

1 = poor and 5 = excellent (please circle)

1                      2                      3                      4                      5

Please rate the overall quality of the venue?

1 = poor and 5 = excellent (please circle)

1                      2                      3                      4                      5

**Please identify the best features of the event**

.....  
.....  
.....  
.....  
.....

**Please identify any areas for improvement**

.....  
.....  
.....  
.....  
.....  
.....

**Thank you once again for your time, please hand this sheet in**

## 11.0 EVALUATION ANALYSIS

### RESULTS

Eight feedback forms were completed and returned.

QUESTION	RESULTS				
	1	2	3	4	5
<b>Presentations/ Speakers</b>					
Was the level of detail provided appropriate? (1 = not enough, 5 = too much)	0	1	6	1	1
Were the presentations an appropriate length? (1 = not enough, 5 = too much)	0	1	5	2	1
Please rate the quality of the presentations and speakers (1= poor, 5 = Excellent)	0	2	0	7	0
Was the content of the DVD appropriate for the event? (1= not enough detail and 5= too much detail)	1	5	3	0	1
<b>Workshop Sessions</b>					
Were the workshops an appropriate length? (1 = too short, 5 = too long)	1	3	4	0	1
Please rate the overall quality of the facilitators (1= poor, 5 = Excellent)	0	1	1	5	2
<b>Organisation</b>					
Please rate the overall organisation and management of the event on the day (1= poor, 5 = Excellent)	0	1	1	5	3
Please rate the communication and background material provided leading up to the event (1= poor, 5 = Excellent)	0	2	1	3	3
<b>Venue</b>					
Was the venue convenient and easy to get to? (1= poor, 5 = Excellent)	0	2	0	0	7
Please rate the overall quality of the venue? (1= poor, 5 = Excellent)	0	2	1	4	2

### ANALYSIS

The results indicate that the level of detail and length of the presentation was appropriate.. The DVD's level of detail was deemed to be appropriate, although the room conditions meant that it was difficult to see the picture due to the light.

#### Workshop Sessions

The length of the workshops was thought to be short in length, and the discussion got easily sidetracked. The facilitators received very good feedback.

**Organisation**

The organisation of the event was deemed to be of a good standard, but it was suggested that all people attending should have read the documents to bring them up to speed on the issues likely to be discussed.

**Venue**

It was noted that the acoustics of the venue made it hard to hear during the workshops as they all took place in one room. Due to bright light, it was said to be difficult for the participants to see the DVD.

**BEST FEATURES OF THE EVENT**

The workshops were deemed to be the best feature of the event as it allowed the delegates to discuss the key issues of Bradford. The opportunity to network was also considered to be a highlight.

**AREAS FOR IMPROVEMENT**

Keeping track of the discussion, and allowing all those who attended to express their views.

**CONCLUSIONS/ LEARNING POINTS**

- The general format of presentation then workshops is still a success, even with larger groups
- The acoustics, lighting and heating conditions in this venue need to be improved
- The response rate to the feedback questionnaire should be improved.







Produced by the  
City of Bradford Metropolitan  
District Council

Local Development  
Framework Group

Summer 2007

